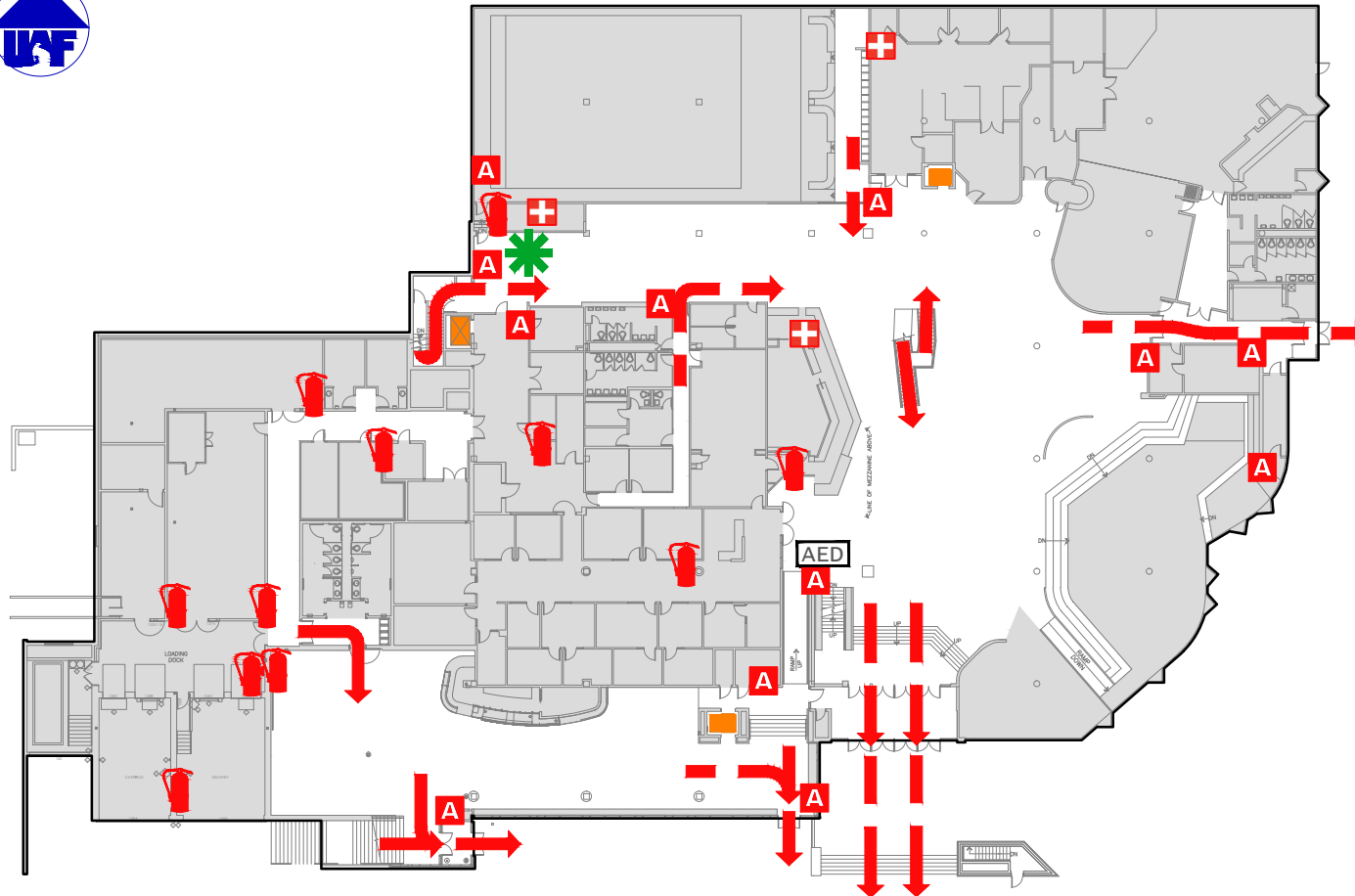


# EVACUATION PLAN

WOOD CENTER, FS505

FLOOR 1

**CALL 911**



FIRE  
POLICE  
MEDICAL

IN CASE OF FIRE, PULL  
FIRE ALARM, USE EXIT  
STAIRS, CLOSE ALL  
WINDOWS AND DOORS,  
DO NOT USE ELEVATOR.



FIRE ALARM WILL SOUND AS  
CHIRPING ELECTRICAL HORN,  
STROBE LIGHT WILL FLASH.

PERSONS  
WITH  
DISABILITIES

CALL 911, REPORT  
YOUR LOCATION,  
PROCEED TO THE  
NEAREST EXIT OR EXIT  
STAIRWELL AND  
AWAIT ASSISTANCE.



## SYMBOL LEGEND

- EMERGENCY EGRESS PATH
- FIRE EXTINGUISHER
- ALARM PULL STATION
- EMERGENCY ASSEMBLY AREA
- STAIRS
- AUTOMATED ELECTRONIC DEFIBRILLATOR
- ELEVATOR
- FIRST AID
- YOU ARE HERE

## EVACUATION SITE

