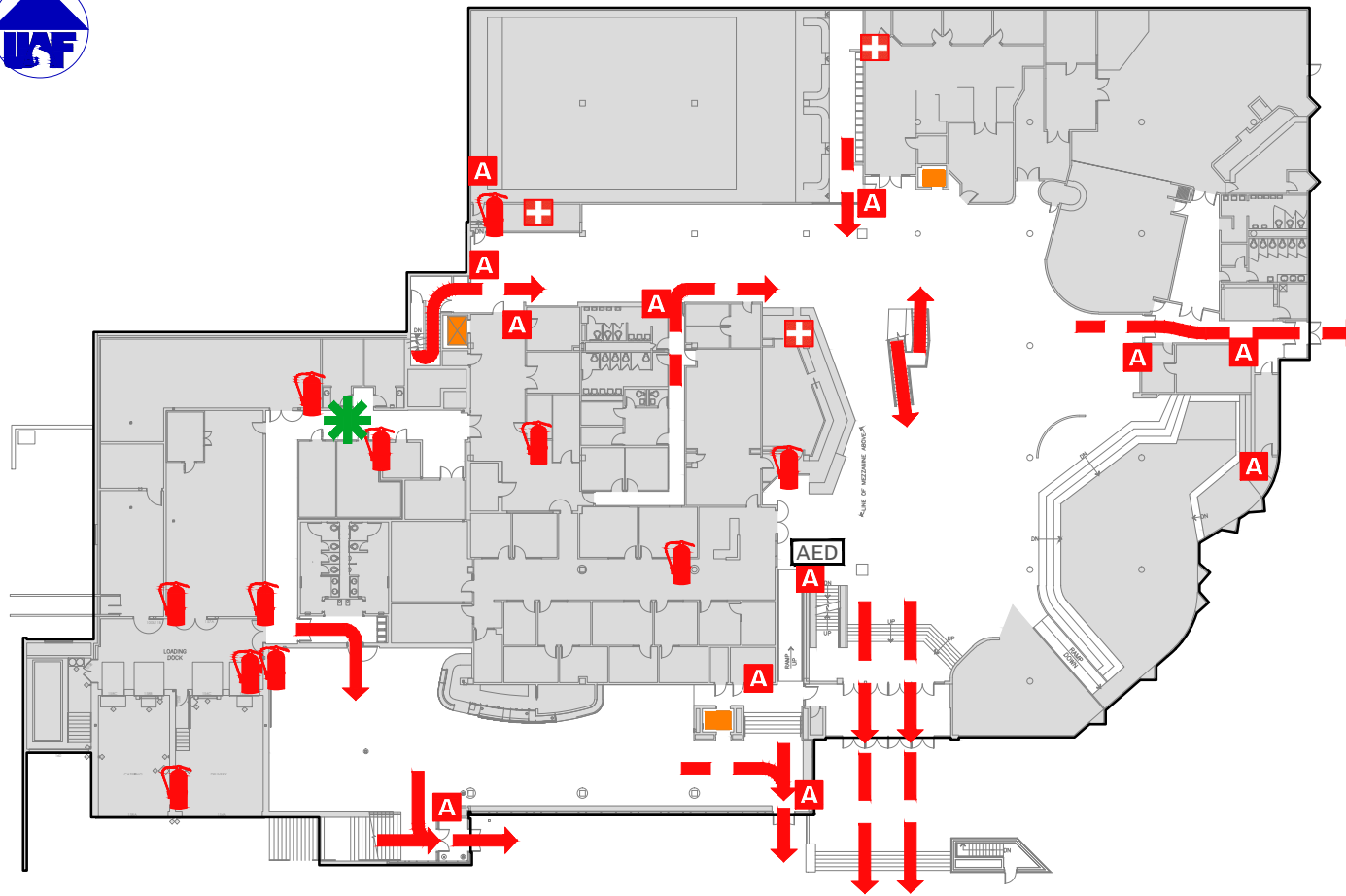


# EVACUATION PLAN

WOOD CENTER, FS505

FLOOR 1

**CALL 911**



**FIRE  
POLICE  
MEDICAL**

IN CASE OF FIRE, PULL  
FIRE ALARM, USE EXIT  
STAIRS, CLOSE ALL  
WINDOWS AND DOORS,  
DO NOT USE ELEVATOR.



FIRE ALARM WILL SOUND AS  
CHIRPING ELECTRICAL HORN,  
STROBE LIGHT WILL FLASH.

**PERSONS  
WITH  
DISABILITIES**

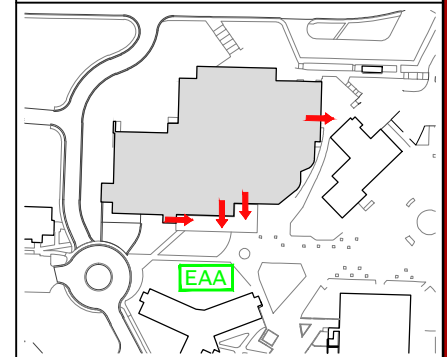
CALL 911, REPORT  
YOUR LOCATION,  
PROCEED TO THE  
NEAREST EXIT OR EXIT  
STAIRWELL AND  
AWAIT ASSISTANCE.



## SYMBOL LEGEND

- |  |                       |  |                                    |  |              |
|--|-----------------------|--|------------------------------------|--|--------------|
|  | EMERGENCY EGRESS PATH |  | EMERGENCY ASSEMBLY AREA            |  | ELEVATOR     |
|  | FIRE EXTINGUISHER     |  | STAIRS                             |  | FIRST AID    |
|  | ALARM PULL STATION    |  | AUTOMATED ELECTRONIC DEFIBRILLATOR |  | YOU ARE HERE |

## EVACUATION SITE



LAST REVISION: DECEMBER 2016  
FOR REVISIONS OR COPIES CONTACT DDC DRAFTING AT UAF-DDC-CADD@ALASKA.EDU