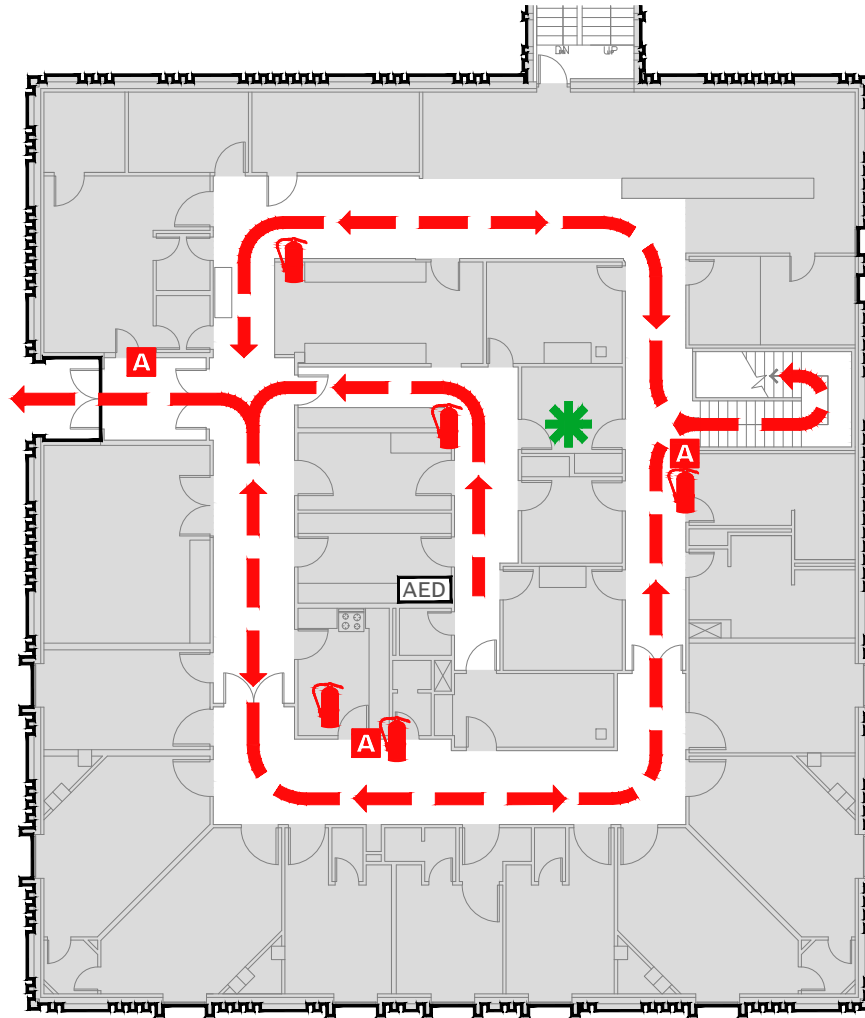


WHITAKER BUILDING II EVACUATION PLAN

FS612
FLOOR 2



CALL 911

FIRE/POLICE/MEDICAL

IN CASE OF FIRE, PULL FIRE ALARM, USE EXIT STAIRS, CLOSE ALL WINDOWS AND DOORS, DO NOT USE ELEVATOR.



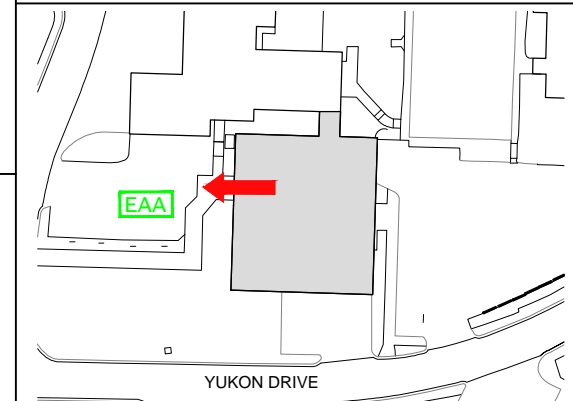
FIRE ALARM WILL SOUND AS CHIRPING ELECTRICAL HORN, STROBE LIGHT WILL FLASH.

**PERSONS
WITH
DISABILITIES**



CALL 911, REPORT YOUR LOCATION, PROCEED TO THE NEAREST EXIT OR EXIT STAIRWELL AND AWAIT ASSISTANCE.

EVACUATION SITE



SYMBOL LEGEND

- EMERGENCY EGRESS PATH
- EMERGENCY ASSEMBLY AREA
- FIRE EXTINGUISHER
- ALARM PULL STATION
- AUTOMATED ELECTRONIC DEFIBRILLATOR
- STAIRS
- YOU ARE HERE

LAST REVISION: 29 JUNE 2016

FOR REVISIONS OR COPIES CONTACT DDC DRAFTING AT UAF-DDC-CADD@ALASKA.EDU