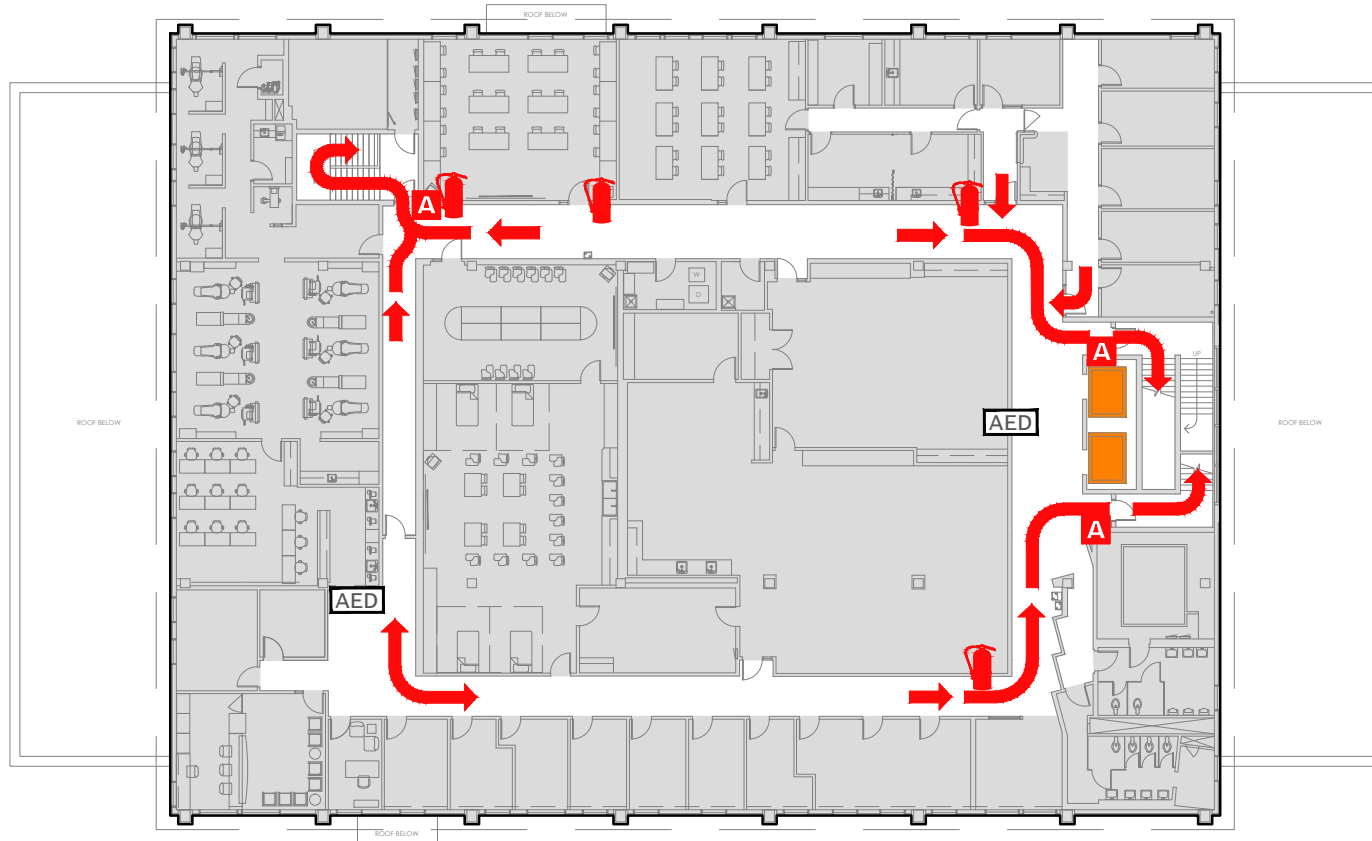




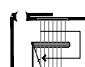





EVACUATION PLAN

UAF COMMUNITY & TECHNICAL COLLEGE
TV655
FLOOR 4



SYMBOL LEGEND

- | | | | | | |
|---|-----------------------|---|--------------|---|------------------------------------|
|  | EMERGENCY EGRESS PATH |  | ELEVATOR |  | EMERGENCY ASSEMBLY AREA |
|  | FIRE EXTINGUISHER |  | STAIRS |  | AUTOMATED ELECTRONIC DEFIBRILLATOR |
|  | ALARM PULL STATION |  | YOU ARE HERE | | |



CALL 911

FIRE
POLICE
MEDICAL

IN CASE OF FIRE, PULL
FIRE ALARM, USE EXIT
STAIRS, CLOSE ALL
WINDOWS AND DOORS,
DO NOT USE ELEVATOR.



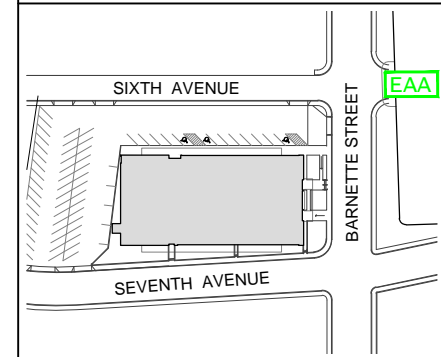
FIRE ALARM WILL SOUND AS
CHIRPING ELECTRICAL HORN,
STROBE LIGHT WILL FLASH.

**PERSONS
WITH
DISABILITIES**

CALL 911, REPORT
YOUR LOCATION,
PROCEED TO THE
NEAREST EXIT OR EXIT
STAIRWELL AND
AWAIT ASSISTANCE.



EVACUATION SITE



LAST REVISION: SEPTEMBER 2016

FOR REVISIONS OR COPIES CONTACT DDC DRAFTING AT UAF-DDC-CADD@ALASKA.EDU