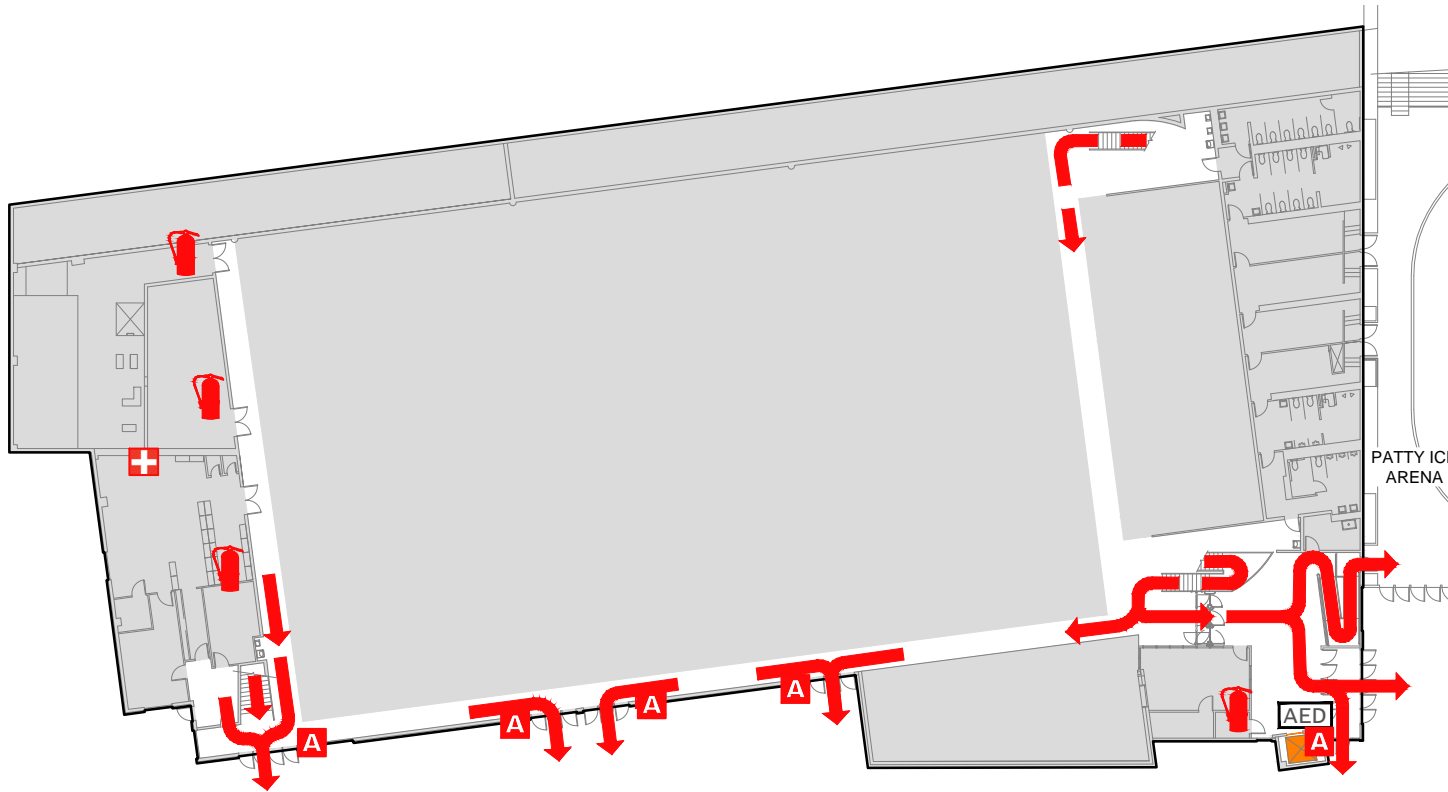


EVACUATION PLAN

STUDENT RECREATION CENTER, FS414
FLOOR 1



SYMBOL LEGEND

EMERGENCY EGRESS PATH

EMERGENCY ASSEMBLY AREA

ELEVATOR

FIRE EXTINGUISHER

STAIRS

FIRST AID

ALARM PULL STATION

AUTOMATED ELECTRONIC DEFIBRILLATOR

YOU ARE HERE

CALL 911

FIRE
POLICE
MEDICAL

IN CASE OF FIRE, PULL
FIRE ALARM, USE EXIT
STAIRS, CLOSE ALL
WINDOWS AND DOORS,
DO NOT USE ELEVATOR.



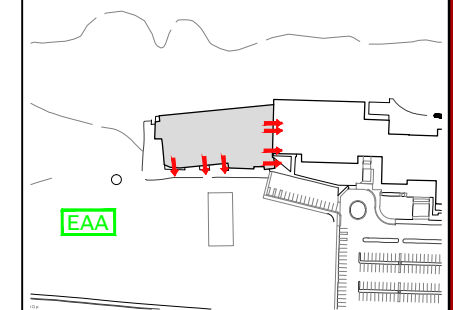
FIRE ALARM WILL SOUND AS
CHIRPING ELECTRICAL HORN,
STROBE LIGHT WILL FLASH.

PERSONS
WITH
DISABILITIES

CALL 911, REPORT
YOUR LOCATION,
PROCEED TO THE
NEAREST EXIT OR EXIT
STAIRWELL AND
AWAIT ASSISTANCE.



EVACUATION SITE



LAST REVISION: DECEMBER 2016

FOR REVISIONS OR COPIES CONTACT DDC DRAFTING AT UAF-DDC-CADD@ALASKA.EDU