

# EVACUATION PLAN

SALISBURY THEATRE, FS311

FLOOR 2



**CALL 911**

**FIRE  
POLICE  
MEDICAL**

IN CASE OF FIRE, PULL  
FIRE ALARM, USE EXIT  
STAIRS, CLOSE ALL  
WINDOWS AND DOORS,  
DO NOT USE ELEVATOR.



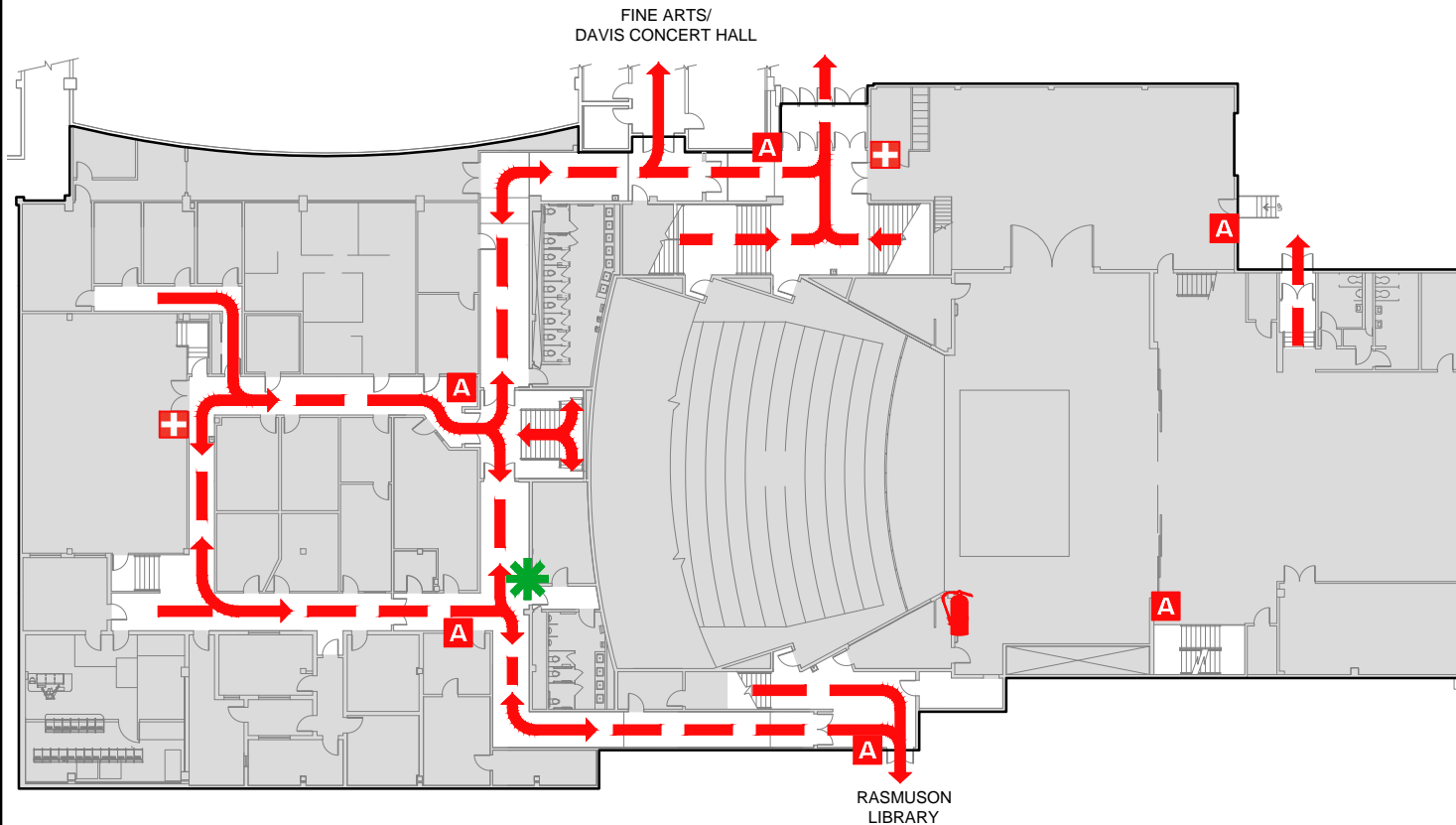
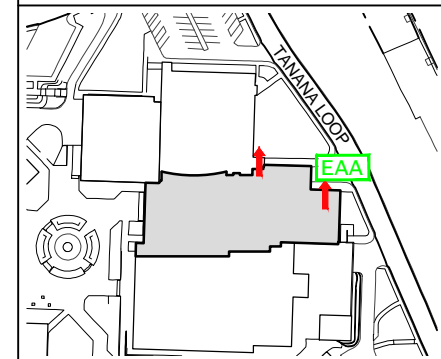
FIRE ALARM WILL SOUND AS  
CHIRPING ELECTRICAL HORN,  
STROBE LIGHT WILL FLASH.

**PERSONS  
WITH  
DISABILITIES**

CALL 911, REPORT  
YOUR LOCATION,  
PROCEED TO THE  
NEAREST EXIT OR EXIT  
STAIRWELL AND  
AWAIT ASSISTANCE.



**EVACUATION SITE**



**SYMBOL LEGEND**

EMERGENCY EGRESS PATH

FIRE EXTINGUISHER

ALARM PULL STATION

STAIRS

YOU ARE HERE

EMERGENCY ASSEMBLY AREA

FIRST AID