

EVACUATION PLAN

REICHARDT BUILDING, FS900

FLOOR 2



CALL 911

**FIRE
POLICE
MEDICAL**

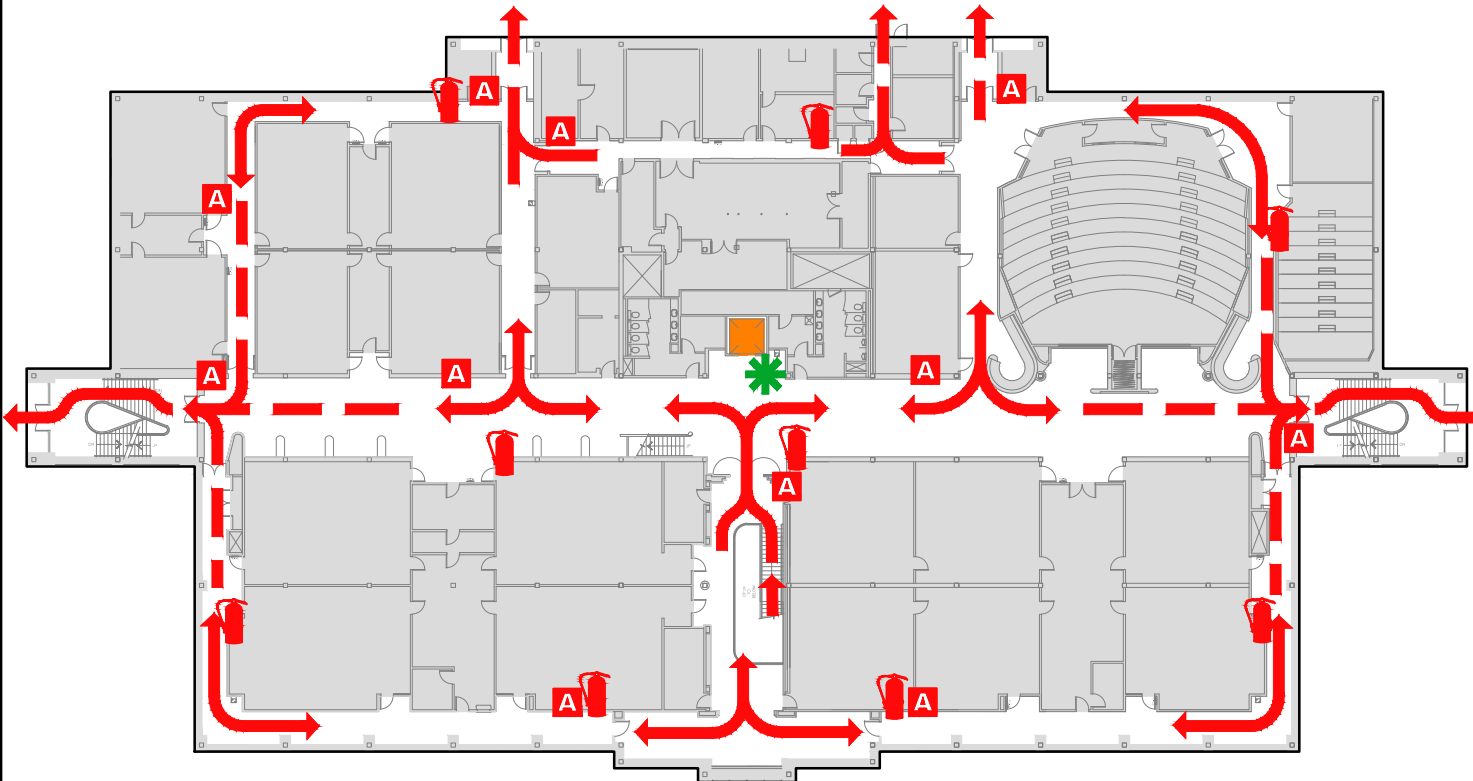
IN CASE OF FIRE, PULL
FIRE ALARM, USE EXIT
STAIRS, CLOSE ALL
WINDOWS AND DOORS,
DO NOT USE ELEVATOR.



FIRE ALARM WILL SOUND AS
CHIRPING ELECTRICAL HORN,
STROBE LIGHT WILL FLASH.

**PERSONS
WITH
DISABILITIES**

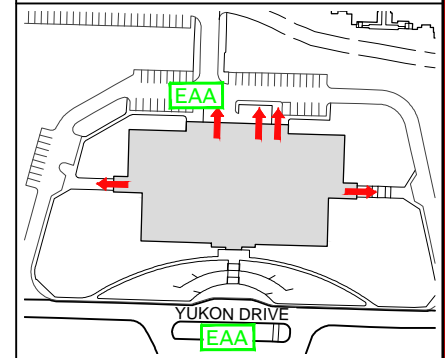
CALL 911, REPORT
YOUR LOCATION,
PROCEED TO THE
NEAREST EXIT OR EXIT
STAIRWELL AND
AWAIT ASSISTANCE.



SYMBOL LEGEND

- EMERGENCY EGRESS PATH
- ELEVATOR
- ALARM PULL STATION
- YOU ARE HERE
- FIRE EXTINGUISHER
- STAIRS
- EMERGENCY ASSEMBLY AREA

EVACUATION SITE



LAST REVISION: SEPTEMBER 2016

FOR REVISIONS OR COPIES CONTACT DDC DRAFTING AT UAF-DDC-CADD@ALASKA.EDU