

# EVACUATION PLAN

REICHARDT BUILDING, FS900

FLOOR 2



**CALL 911**

**FIRE  
POLICE  
MEDICAL**

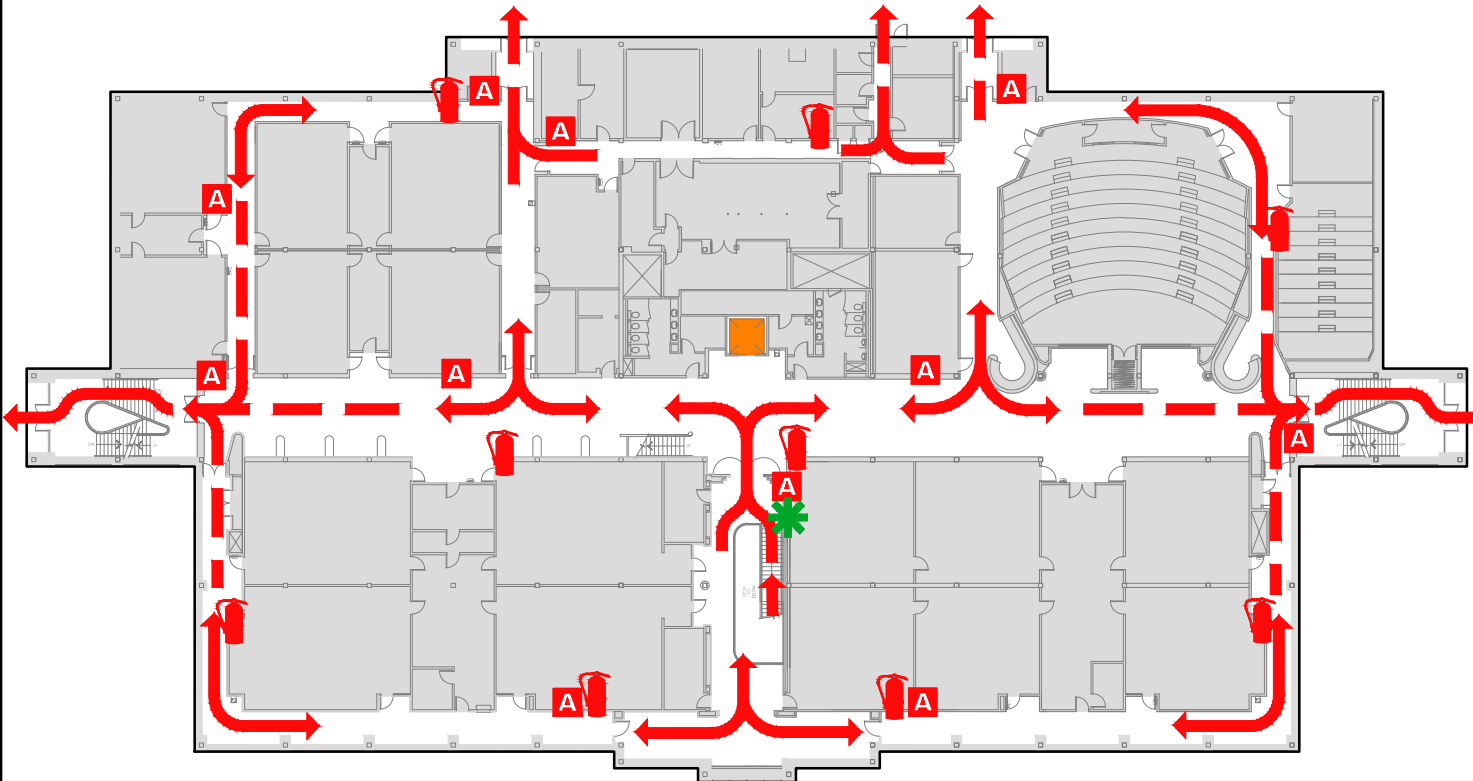
IN CASE OF FIRE, PULL  
FIRE ALARM, USE EXIT  
STAIRS, CLOSE ALL  
WINDOWS AND DOORS,  
DO NOT USE ELEVATOR.



FIRE ALARM WILL SOUND AS  
CHIRPING ELECTRICAL HORN,  
STROBE LIGHT WILL FLASH.

**PERSONS  
WITH  
DISABILITIES**

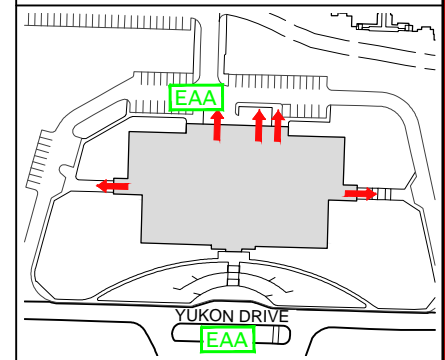
CALL 911, REPORT  
YOUR LOCATION,  
PROCEED TO THE  
NEAREST EXIT OR EXIT  
STAIRWELL AND  
AWAIT ASSISTANCE.



## SYMBOL LEGEND

- EMERGENCY EGRESS PATH
- FIRE EXTINGUISHER
- ELEVATOR
- STAIRS
- ALARM PULL STATION
- EMERGENCY ASSEMBLY AREA
- YOU ARE HERE

## EVACUATION SITE



LAST REVISION: SEPTEMBER 2016

FOR REVISIONS OR COPIES CONTACT DDC DRAFTING AT UAF-DDC-CADD@ALASKA.EDU