



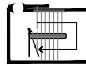



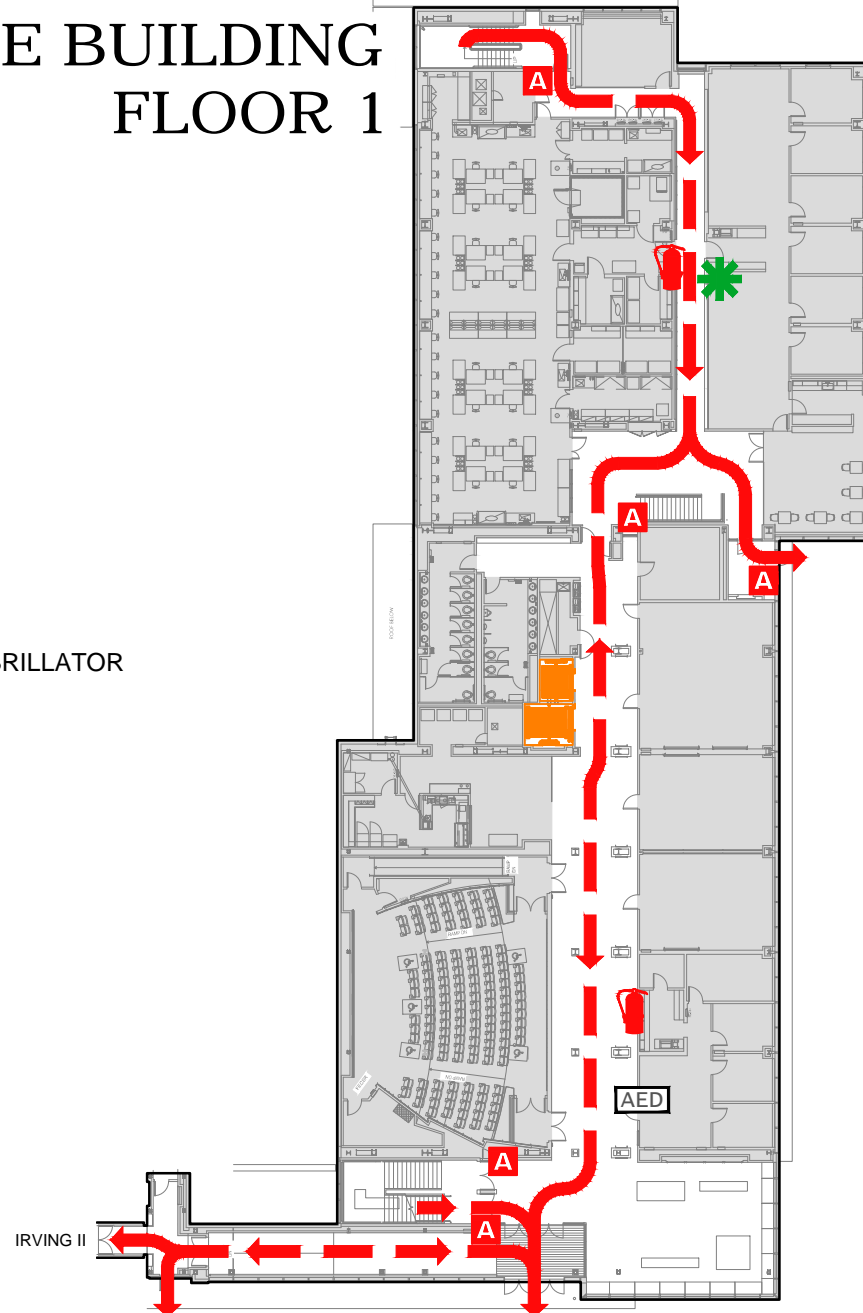


EVACUATION PLAN

MARGARET MURIE BUILDING FS982 FLOOR 1

SYMBOL LEGEND

-  EMERGENCY EGRESS PATH
-  FIRE EXTINGUISHER
-  ALARM PULL STATION
-  ELEVATOR
-  EMERGENCY EGRESS PATH
-  AUTOMATED ELECTRONIC DEFIBRILLATOR
-  EMERGENCY ASSEMBLY AREA
-  YOU ARE HERE



CALL 911

**FIRE
POLICE
MEDICAL**

IN CASE OF FIRE, PULL
FIRE ALARM, USE EXIT
STAIRS, CLOSE ALL
WINDOWS AND DOORS,
DO NOT USE ELEVATOR.



FIRE ALARM WILL SOUND AS
CHIRPING ELECTRICAL HORN,
STROBE LIGHT WILL FLASH.

**PERSONS
WITH
DISABILITIES**

CALL 911, REPORT
YOUR LOCATION,
PROCEED TO THE
NEAREST EXIT OR EXIT
STAIRWELL AND
AWAIT ASSISTANCE.



EVACUATION SITE

