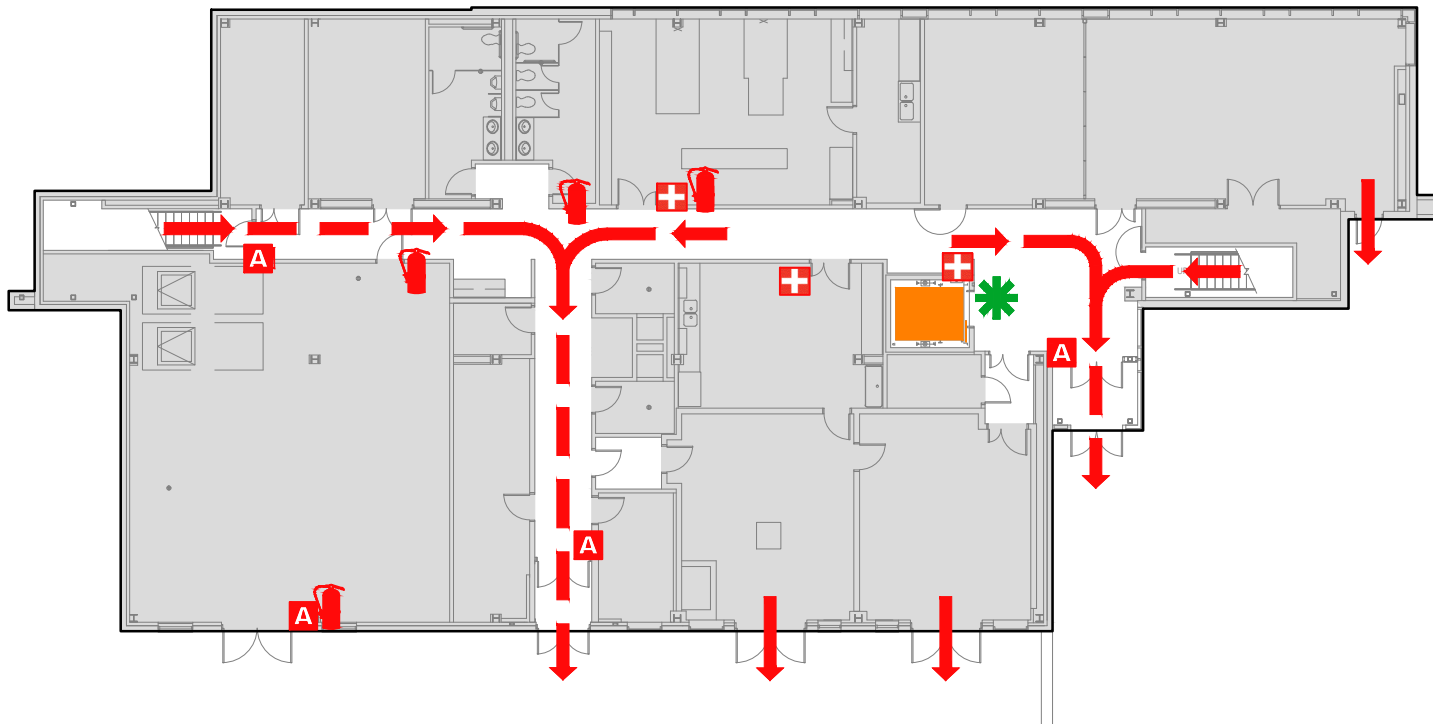


EVACUATION PLAN

SCHOOL OF FISHERIES & OCEAN SCIENCES
 POINT LENA FACILITY, FS914 FLOOR 1



SYMBOL LEGEND

- | | | | | | |
|--|-----------------------|--|-------------------------|--|--------------|
| | EMERGENCY EGRESS PATH | | FIRST AID | | ELEVATOR |
| | FIRE EXTINGUISHER | | EMERGENCY ASSEMBLY AREA | | YOU ARE HERE |
| | ALARM PULL STATION | | STAIRS | | |

CALL 911

FIRE
 POLICE
 MEDICAL

IN CASE OF FIRE, PULL
 FIRE ALARM, USE EXIT
 STAIRS, CLOSE ALL
 WINDOWS AND DOORS,
 DO NOT USE ELEVATOR.



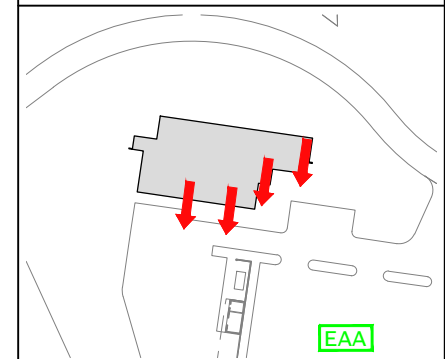
FIRE ALARM WILL SOUND AS
 CHIRPING ELECTRICAL HORN,
 STROBE LIGHT WILL FLASH.

**PERSONS
 WITH
 DISABILITIES**

CALL 911, REPORT
 YOUR LOCATION,
 PROCEED TO THE
 NEAREST EXIT OR EXIT
 STAIRWELL AND
 AWAIT ASSISTANCE.



EVACUATION SITE



LAST REVISION: JANUARY 2017

FOR REVISIONS OR COPIES CONTACT DDC DRAFTING AT UAF-DDC-CADD@ALASKA.EDU