

EVACUATION PLAN

IRVING II BUILDING, FS906

FLOOR 2



CALL 911

FIRE
POLICE
MEDICAL

IN CASE OF FIRE, PULL
FIRE ALARM. USE EXIT
STAIRS. CLOSE ALL
WINDOWS AND DOORS.
DO NOT USE ELEVATOR.



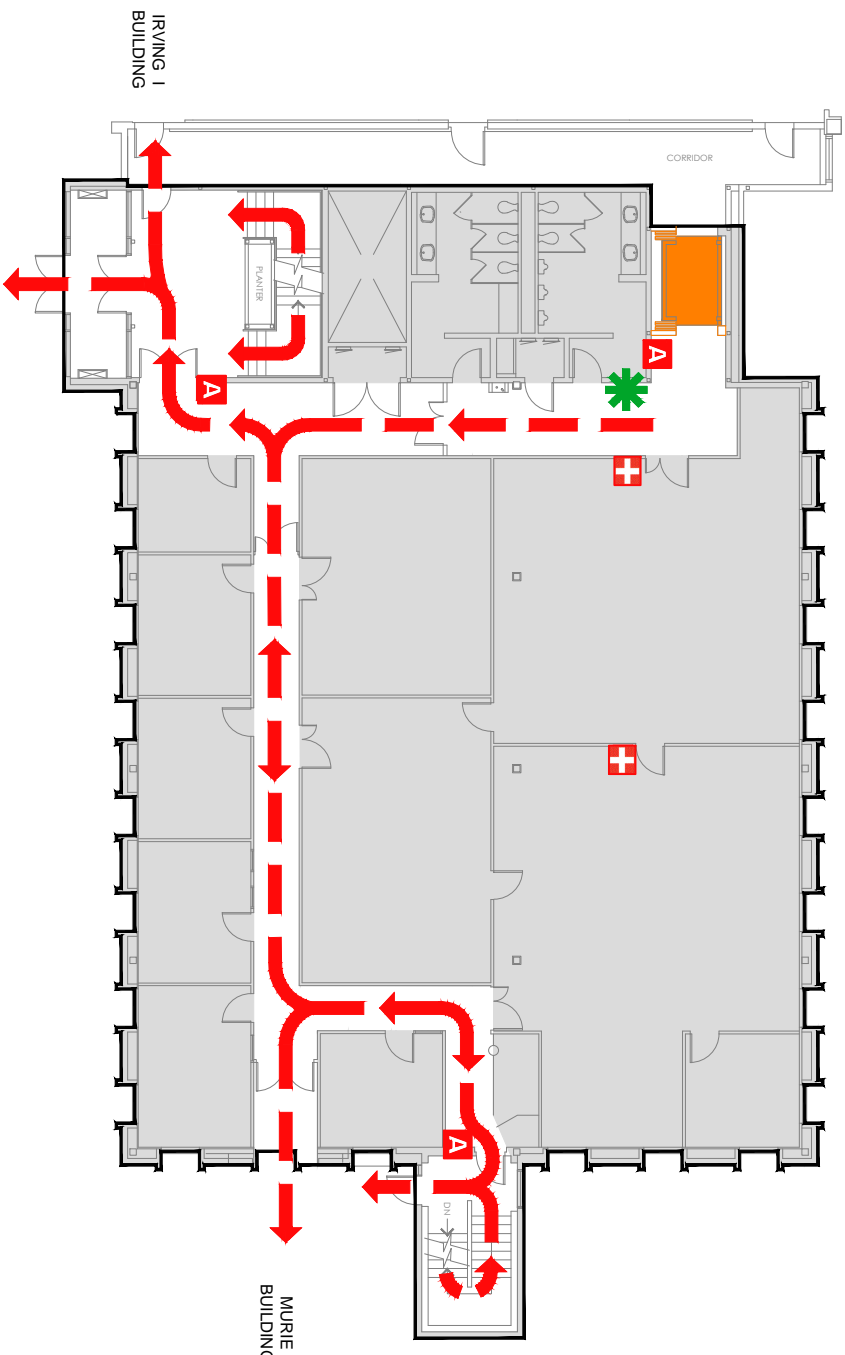
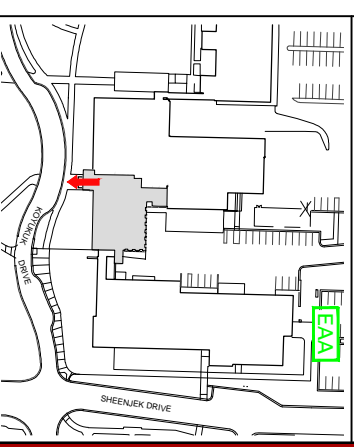
FIRE ALARM WILL SOUND AS
CHIRPING ELECTRICAL HORN,
STROBE LIGHT WILL FLASH.

PERSONS
WITH
DISABILITIES

CALL 911, REPORT
YOUR LOCATION,
PROCEED TO THE
NEAREST EXIT OR EXIT
STAIRWELL AND
AWAIT ASSISTANCE.



EVACUATION SITE



SYMBOL LEGEND

EMERGENCY EGRESS PATH

FIRST AID

ALARM PULL STATION

EMERGENCY ASSEMBLY AREA

YOU ARE HERE

ELEVATOR

STAIRS