




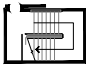

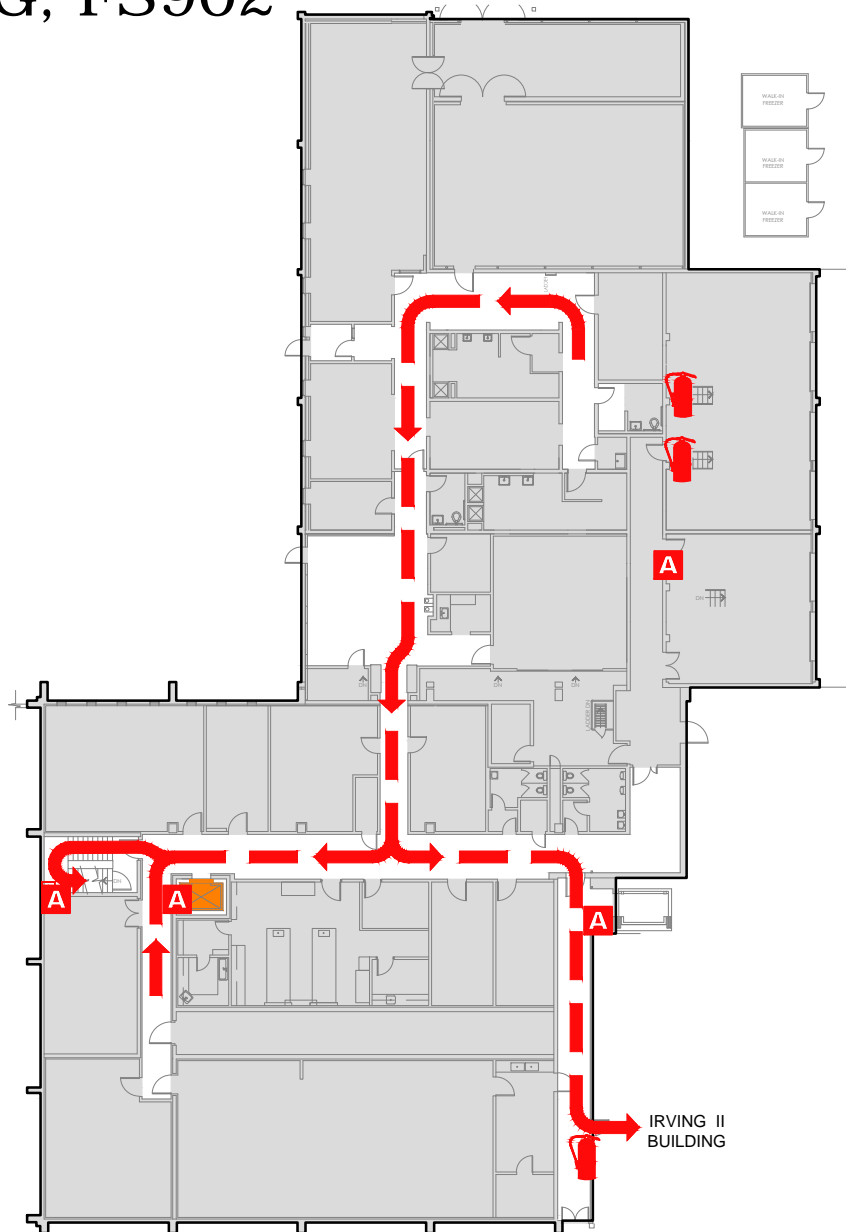


# EVACUATION PLAN

IRVING I BUILDING, FS902  
FLOOR 1

## SYMBOL LEGEND

-  EMERGENCY EGRESS PATH
-  ALARM PULL STATION
-  ELEVATOR
-  EMERGENCY ASSEMBLY AREA
-  FIRE EXTINGUISHER
-  STAIRS
-  YOU ARE HERE



**CALL 911**

**FIRE  
POLICE  
MEDICAL**

IN CASE OF FIRE, PULL  
FIRE ALARM, USE EXIT  
STAIRS, CLOSE ALL  
WINDOWS AND DOORS,  
DO NOT USE ELEVATOR.



FIRE ALARM WILL SOUND AS  
CHIRPING ELECTRICAL HORN,  
STROBE LIGHT WILL FLASH.

**PERSONS  
WITH  
DISABILITIES**

CALL 911, REPORT  
YOUR LOCATION,  
PROCEED TO THE  
NEAREST EXIT OR EXIT  
STAIRWELL AND  
AWAIT ASSISTANCE.



**EVACUATION SITE**

