

EVACUATION PLAN

FINE ARTS BUILDING, FS313

FLOOR 3



CALL 911

**FIRE
POLICE
MEDICAL**

IN CASE OF FIRE, PULL
FIRE ALARM, USE EXIT
STAIRS, CLOSE ALL
WINDOWS AND DOORS,
DO NOT USE ELEVATOR.



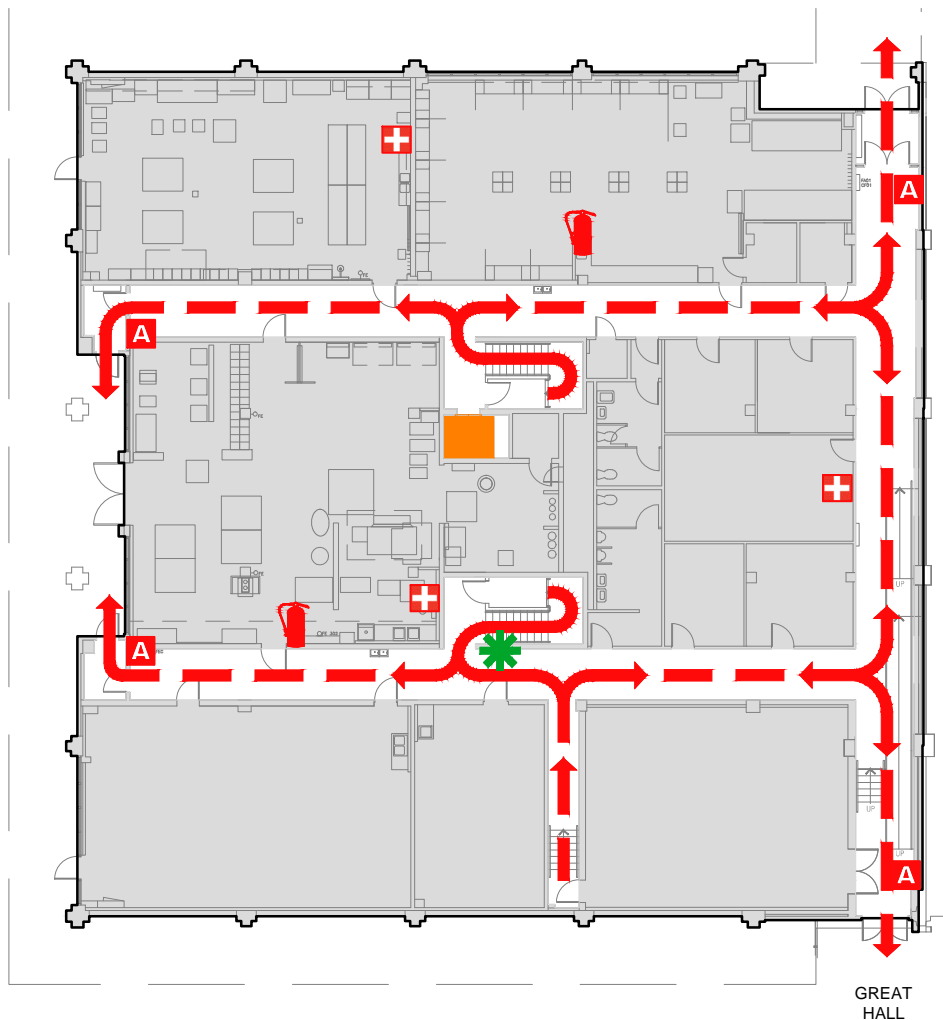
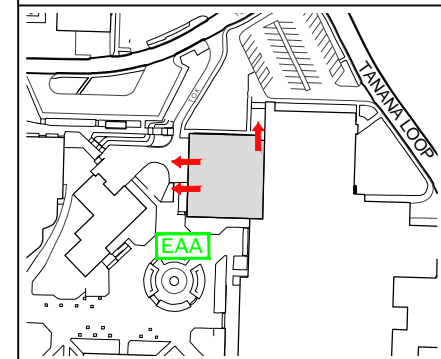
FIRE ALARM WILL SOUND AS
CHIRPING ELECTRICAL HORN,
STROBE LIGHT WILL FLASH.

**PERSONS
WITH
DISABILITIES**

CALL 911, REPORT
YOUR LOCATION,
PROCEED TO THE
NEAREST EXIT OR EXIT
STAIRWELL AND
AWAIT ASSISTANCE.



EVACUATION SITE



SYMBOL LEGEND

- | | | | | | |
|--|-------------------------|--|--------------------|--|--------------|
| | EMERGENCY EGRESS PATH | | ALARM PULL STATION | | STAIRS |
| | FIRE EXTINGUISHER | | FIRST AID | | YOU ARE HERE |
| | EMERGENCY ASSEMBLY AREA | | ELEVATOR | | |