

# EVACUATION PLAN

C.T. ELVEY BUILDING, FS903

FLOOR 3



**CALL 911**

**FIRE  
POLICE  
MEDICAL**

IN CASE OF FIRE, PULL  
FIRE ALARM, USE EXIT  
STAIRS, CLOSE ALL  
WINDOWS AND DOORS,  
DO NOT USE ELEVATOR.



FIRE ALARM WILL SOUND AS  
CHIRPING ELECTRICAL HORN,  
STROBE LIGHT WILL FLASH.

**PERSONS  
WITH  
DISABILITIES**

CALL 911, REPORT  
YOUR LOCATION,  
PROCEED TO THE  
NEAREST EXIT OR EXIT  
STAIRWELL AND  
AWAIT ASSISTANCE.

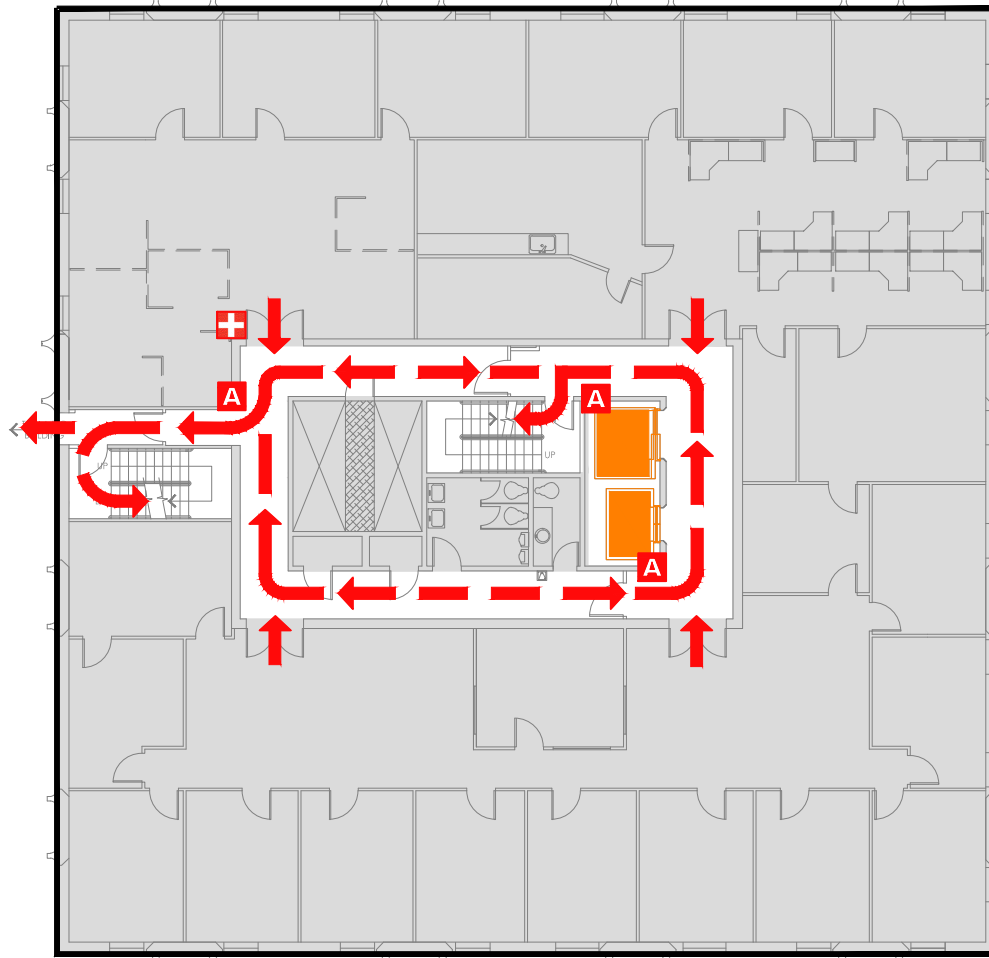


**EVACUATION SITE**



LAST REVISION: JULY 2016

FOR REVISIONS OR COPIES CONTACT DDC DRAFTING AT UAF-DDC-CADD@ALASKA.EDU



## SYMBOL LEGEND

- |  |                         |  |                    |  |              |
|--|-------------------------|--|--------------------|--|--------------|
|  | EMERGENCY EGRESS PATH   |  | ALARM PULL STATION |  | YOU ARE HERE |
|  | EMERGENCY ASSEMBLY AREA |  | ELEVATOR           |  |              |
|  | STAIRS                  |  | FIRST AID          |  |              |