

# EVACUATION PLAN

EIELSON MEMORIAL MINES BUILDING, FS403  
FLOOR 2



**CALL 911**

**FIRE  
POLICE  
MEDICAL**

IN CASE OF FIRE, PULL  
FIRE ALARM, USE EXIT  
STAIRS, CLOSE ALL  
WINDOWS AND DOORS,  
DO NOT USE ELEVATOR.



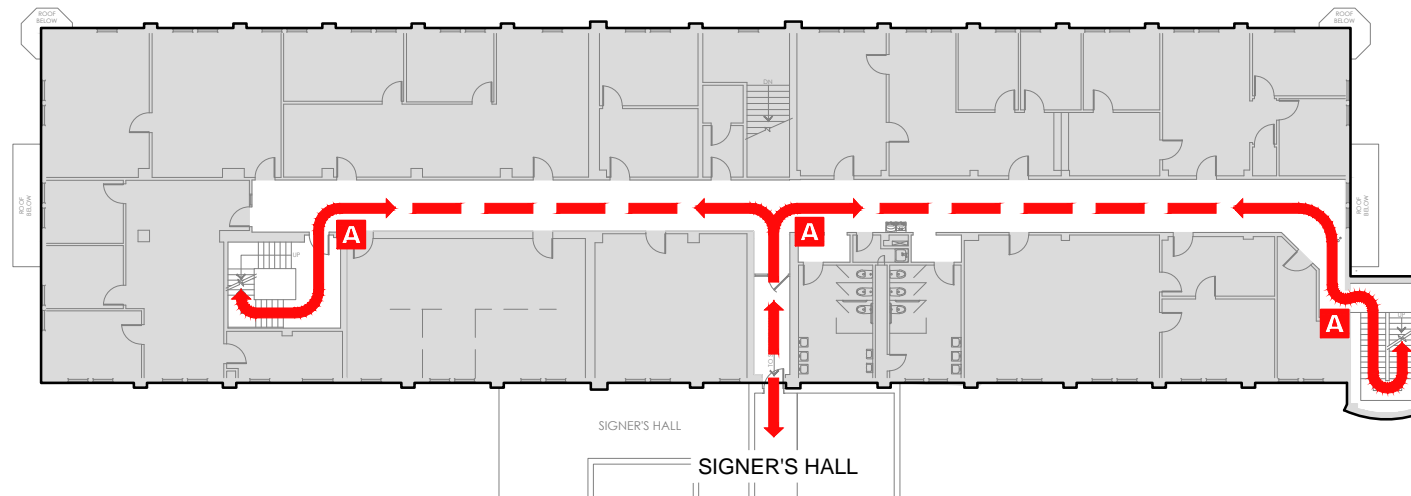
FIRE ALARM WILL SOUND AS  
CHIRPING ELECTRICAL HORN,  
STROBE LIGHT WILL FLASH.

**PERSONS  
WITH  
DISABILITIES**

CALL 911, REPORT  
YOUR LOCATION,  
PROCEED TO THE  
NEAREST EXIT OR EXIT  
STAIRWELL AND  
AWAIT ASSISTANCE.



**EVACUATION SITE**



## SYMBOL LEGEND

- EMERGENCY EGRESS PATH
- EMERGENCY ASSEMBLY AREA
- ELEVATOR
- STAIRS
- ALARM PULL STATION
- YOU ARE HERE