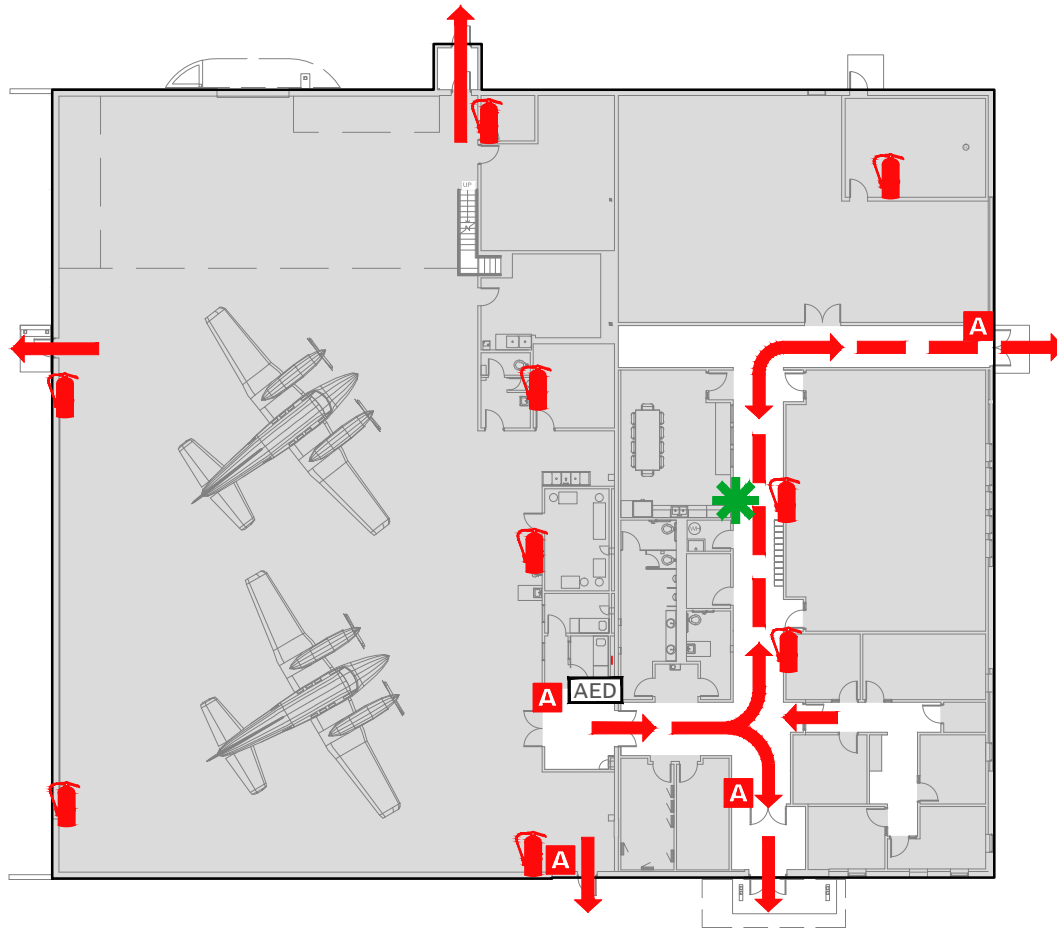


EVACUATION PLAN

CTC AVIATION FACILITY, TV657

FLOOR 1



CALL 911

**FIRE
POLICE
MEDICAL**

IN CASE OF FIRE, PULL FIRE ALARM, USE EXIT STAIRS, CLOSE ALL WINDOWS AND DOORS, DO NOT USE ELEVATOR.



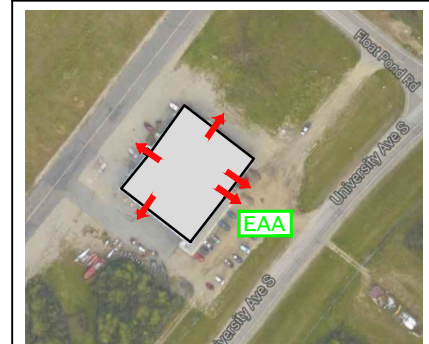
FIRE ALARM WILL SOUND AS CHIRPING ELECTRICAL HORN, STROBE LIGHT WILL FLASH.

PERSONS WITH DISABILITIES

CALL 911, REPORT YOUR LOCATION, PROCEED TO THE NEAREST EXIT OR EXIT STAIRWELL AND AWAIT ASSISTANCE.



EVACUATION SITE



SYMBOL LEGEND

- EMERGENCY EGRESS PATH
- EMERGENCY ASSEMBLY AREA
- ALARM PULL STATION
- FIRE EXTINGUISHER
- YOU ARE HERE
- AUTOMATED ELECTRONIC DEFIBRILLATOR