

EVACUATION PLAN

BUTROVICH BUILDING, SW910

BASEMENT



CALL 911

FIRE
POLICE
MEDICAL

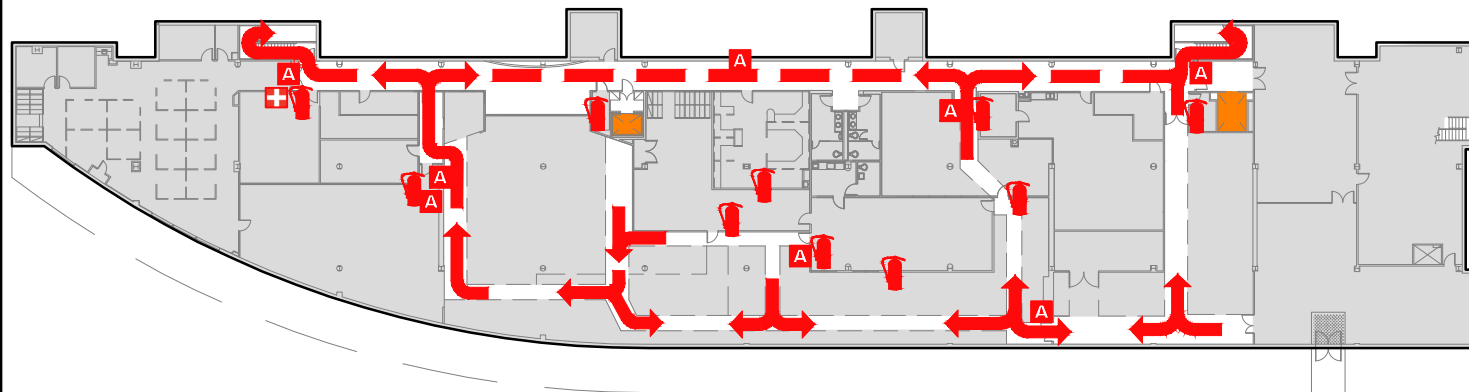
IN CASE OF FIRE, PULL
FIRE ALARM, USE EXIT
STAIRS, CLOSE ALL
WINDOWS AND DOORS,
DO NOT USE ELEVATOR.



FIRE ALARM WILL SOUND AS
CHIRPING ELECTRICAL HORN,
STROBE LIGHT WILL FLASH.

PERSONS
WITH
DISABILITIES

CALL 911, REPORT
YOUR LOCATION,
PROCEED TO THE
NEAREST EXIT OR EXIT
STAIRWELL AND
AWAIT ASSISTANCE.



SYMBOL LEGEND

- | | | | |
|-----------------------|----------|-------------------------|--------------|
| EMERGENCY EGRESS PATH | ELEVATOR | FIRST AID | YOU ARE HERE |
| FIRE EXTINGUISHER | STAIRS | EMERGENCY ASSEMBLY AREA | |
| ALARM PULL STATION | | | |

EVACUATION SITE

