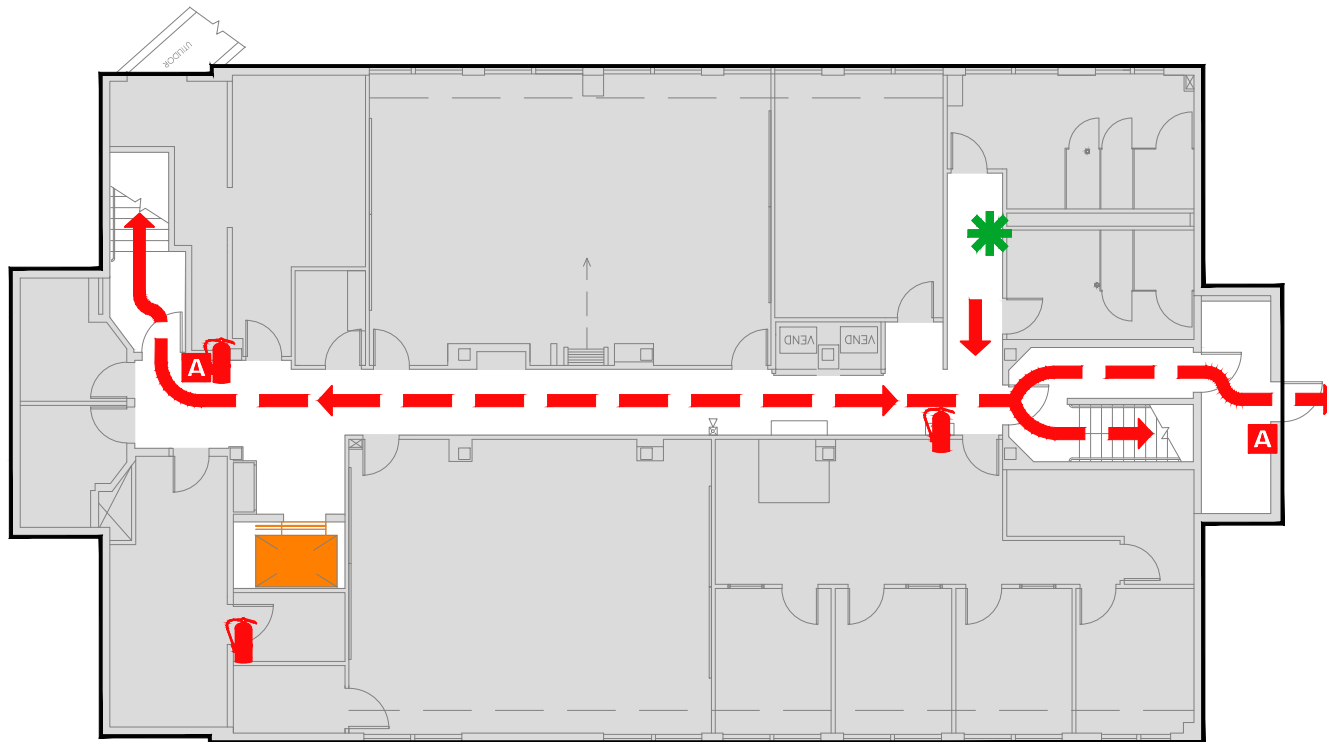


# EVACUATION PLAN

BROOKS MEMORIAL MINES BUILDING, FS305  
FLOOR 1



**CALL 911**

FIRE  
POLICE  
MEDICAL

IN CASE OF FIRE, PULL  
FIRE ALARM, USE EXIT  
STAIRS, CLOSE ALL  
WINDOWS AND DOORS,  
DO NOT USE ELEVATOR.



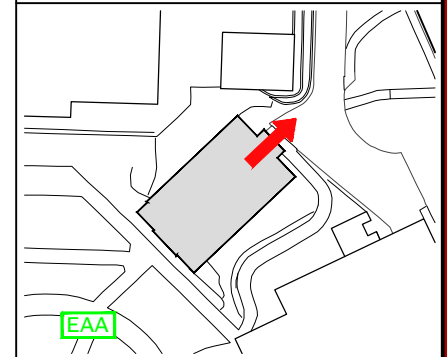
FIRE ALARM WILL SOUND AS  
CHIRPING ELECTRICAL HORN,  
STROBE LIGHT WILL FLASH.

PERSONS  
WITH  
DISABILITIES

CALL 911, REPORT  
YOUR LOCATION,  
PROCEED TO THE  
NEAREST EXIT OR EXIT  
STAIRWELL AND  
AWAIT ASSISTANCE.



EVACUATION SITE



## SYMBOL LEGEND

EMERGENCY EGRESS PATH

FIRE EXTINGUISHER

ALARM PULL STATION

ELEVATOR

STAIRS

EMERGENCY ASSEMBLY AREA

YOU ARE HERE