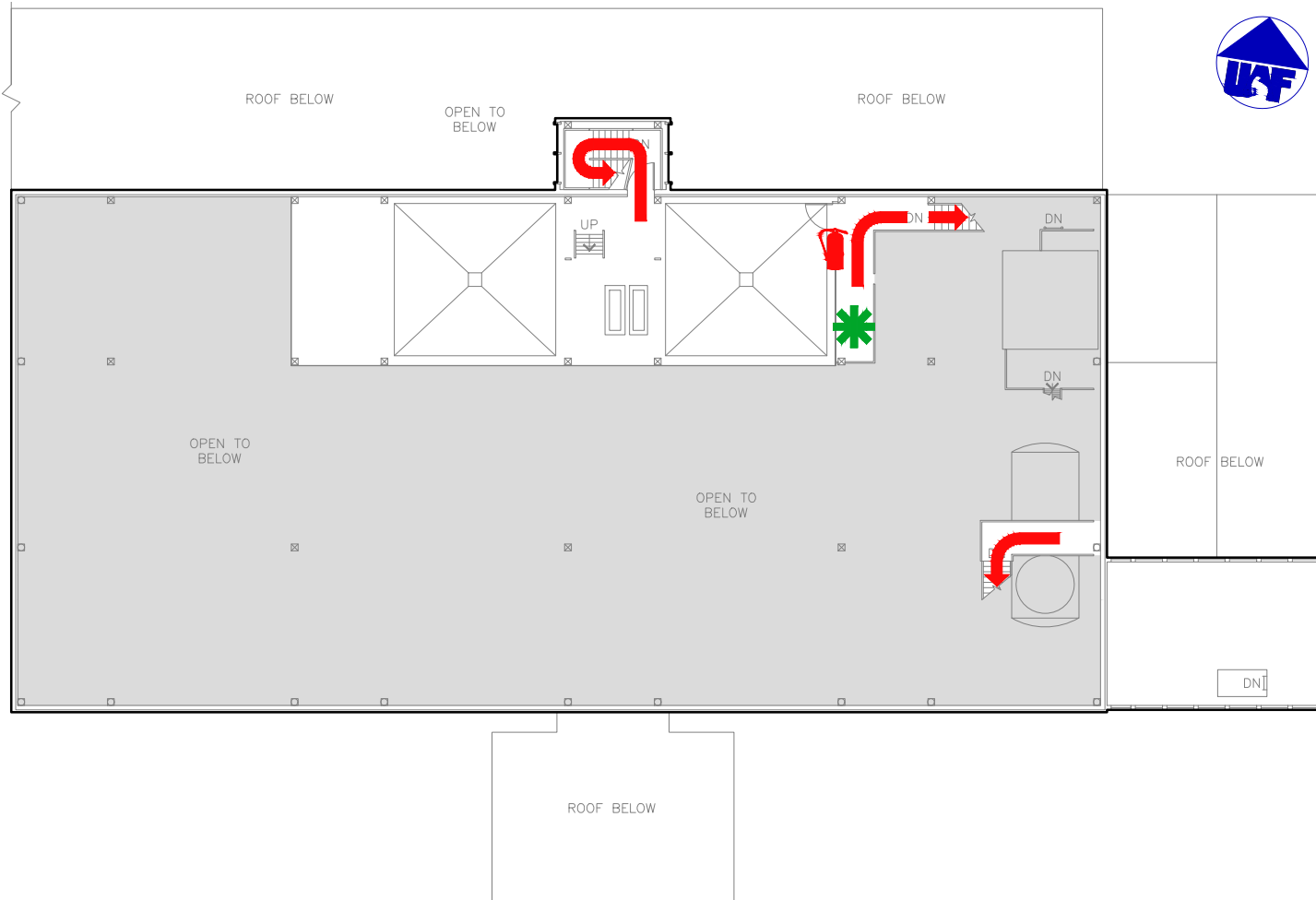


EVACUATION PLAN

ATKINSON BUILDING, FS802

FLOOR 5



CALL 911

**FIRE
POLICE
MEDICAL**

IN CASE OF FIRE, PULL FIRE ALARM, USE EXIT STAIRS, CLOSE ALL WINDOWS AND DOORS, DO NOT USE ELEVATOR.



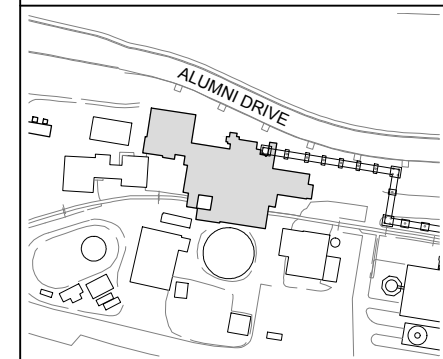
FIRE ALARM WILL SOUND AS CHIRPING ELECTRICAL HORN, STROBE LIGHT WILL FLASH.

**PERSONS
WITH
DISABILITIES**

CALL 911, REPORT YOUR LOCATION, PROCEED TO THE NEAREST EXIT OR EXIT STAIRWELL AND AWAIT ASSISTANCE.



EVACUATION SITE



SYMBOL LEGEND

EMERGENCY EGRESS PATH

STAIRS

FIRE EXTINGUISHER

YOU ARE HERE