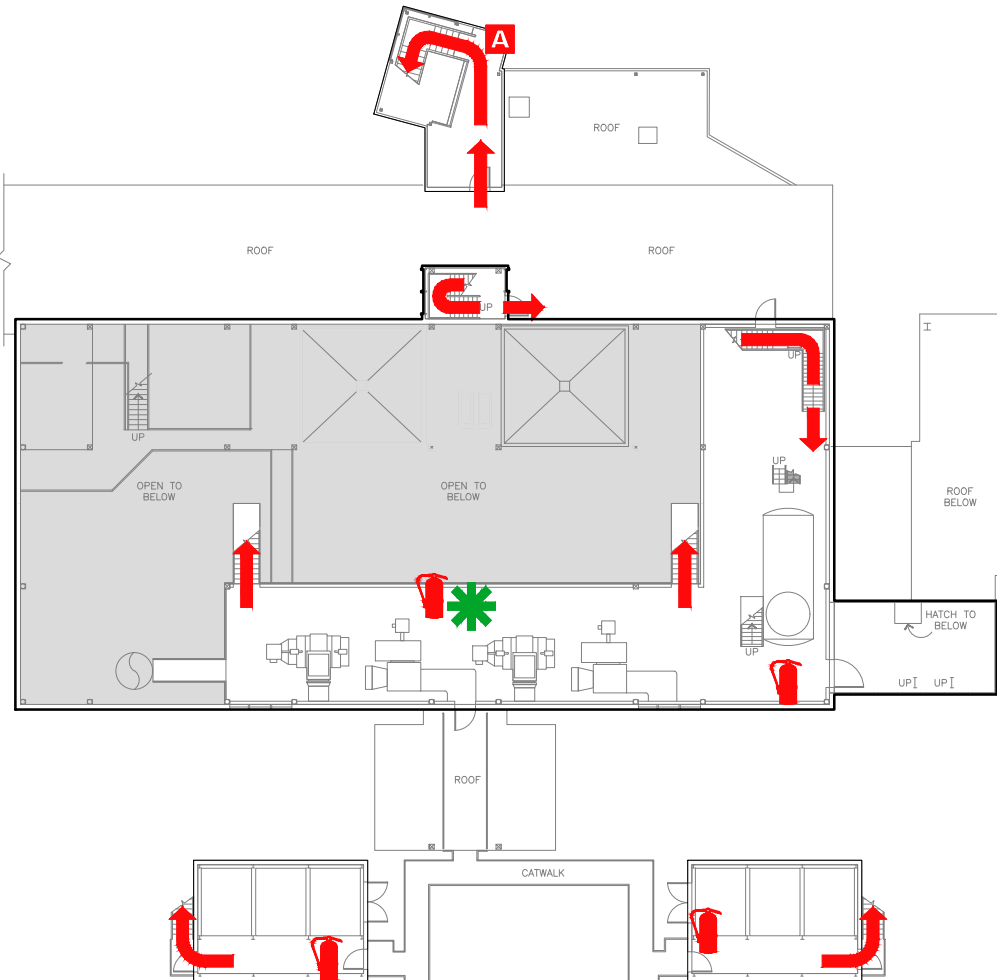


# EVACUATION PLAN

**ATKINSON BUILDING, FS802**

**FLOOR 4**

**CALL 911**



**FIRE  
POLICE  
MEDICAL**

IN CASE OF FIRE, PULL FIRE ALARM, USE EXIT STAIRS, CLOSE ALL WINDOWS AND DOORS, DO NOT USE ELEVATOR.



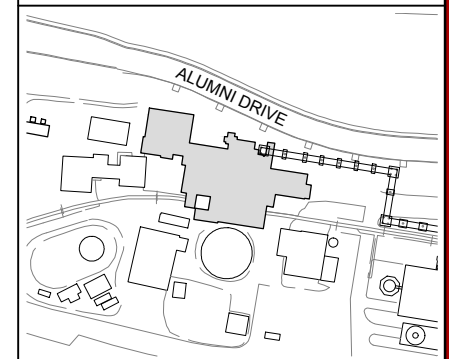
FIRE ALARM WILL SOUND AS CHIRPING ELECTRICAL HORN, STROBE LIGHT WILL FLASH.

**PERSONS  
WITH  
DISABILITIES**

CALL 911, REPORT YOUR LOCATION, PROCEED TO THE NEAREST EXIT OR EXIT STAIRWELL AND AWAIT ASSISTANCE.



**EVACUATION SITE**



**SYMBOL LEGEND**

EMERGENCY EGRESS PATH

ALARM PULL STATION

YOU ARE HERE

FIRE EXTINGUISHER

STAIRS