

EVACUATION PLAN

AKASOFU BUILDING, FS930

FLOOR 1

CALL 911

**FIRE
POLICE
MEDICAL**

IN CASE OF FIRE, PULL
FIRE ALARM, USE EXIT
STAIRS, CLOSE ALL
WINDOWS AND DOORS,
DO NOT USE ELEVATOR.



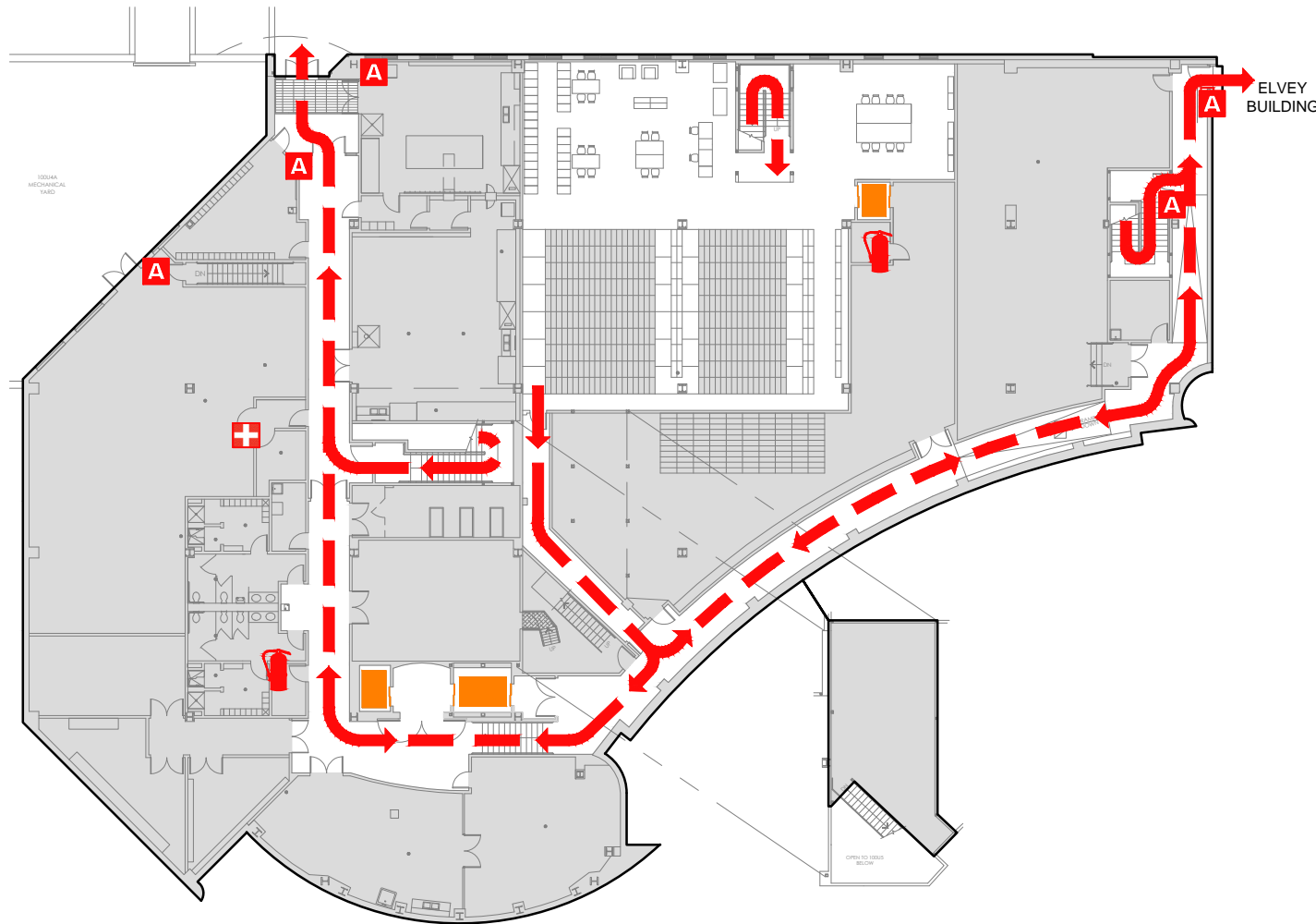
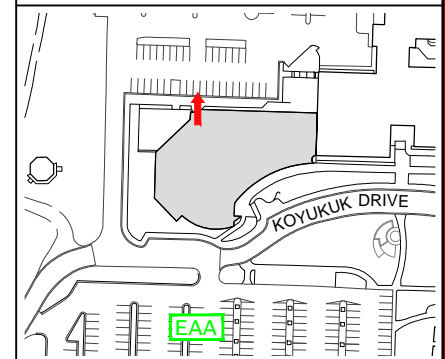
FIRE ALARM WILL SOUND AS
CHIRPING ELECTRICAL HORN,
STROBE LIGHT WILL FLASH.

**PERSONS
WITH
DISABILITIES**

CALL 911, REPORT
YOUR LOCATION,
PROCEED TO THE
NEAREST EXIT OR EXIT
STAIRWELL AND
AWAIT ASSISTANCE.



EVACUATION SITE



SYMBOL LEGEND

- EMERGENCY EGRESS PATH
- ALARM PULL STATION
- FIRE EXTINGUISHER
- ELEVATOR
- STAIRS
- FIRST AID
- EMERGENCY ASSEMBLY AREA
- YOU ARE HERE

