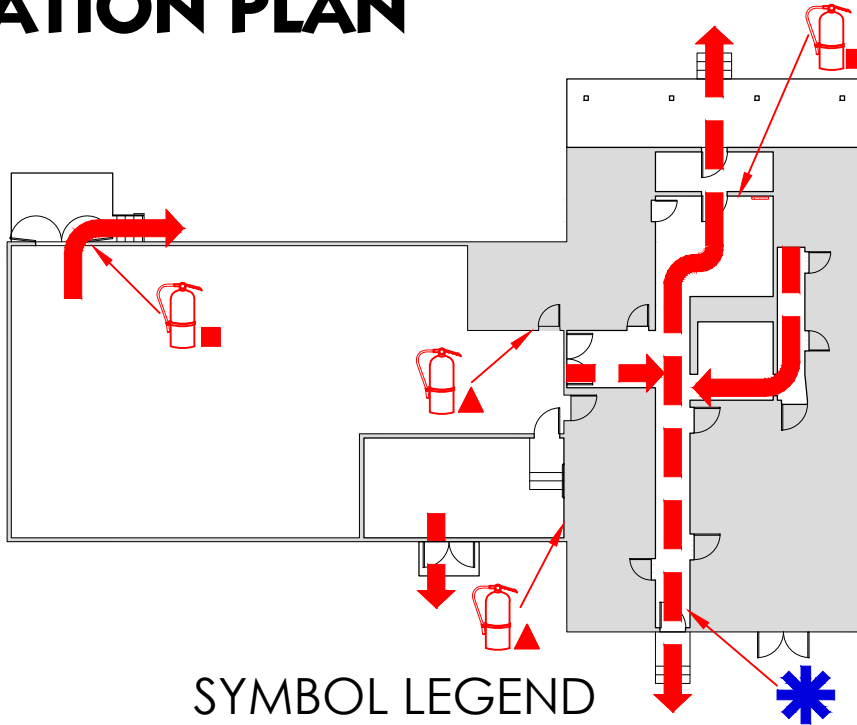


# AFS RICHARDSON HWY MAIN BLDG EVACUATION PLAN

EAA

## FS670 FLOOR 1



### SYMBOL LEGEND



EMERGENCY EGRESS PATH



EMERGENCY ASSEMBLY AREA



FIRE EXTINGUISHER  
▲ CO2 FE    ■ DRY CHEM FE



YOU ARE HERE



ALARM PULL STATION

## CALL 911 FIRE/POLICE/MEDICAL



IN CASE OF FIRE, PULL FIRE ALARM, USE EXIT STAIRS, CLOSE ALL WINDOWS AND DOORS, DO NOT USE ELEVATOR

ALARM WILL SOUND AS WHOOPING ELECTRICAL HORN, STROBE LIGHT WILL FLASH, PUBLIC ADDRESS SYSTEM WILL BE USED FOR ANNOUNCEMENTS. LISTEN FOR INSTRUCTIONS.

## PERSONS WITH DISABILITIES



SHALL CALL 911, REPORT THEIR LOCATION, PROCEED TO THE NEAREST EXIT STAIRWELL AND AWAIT ASSISTANCE.